



THE GUILDHALL COMPLEX, YORK

City of York Council

Planning & Listed Building Consent

16/01971/FULM & 16/01972/LBC

16 February 2017

0.0 CONTENTS

0.0 Contents	
1.0 Proposed Ground Floor Plan	04
2.0 Proposed First Floor Plan	05
3.0 Proposed Second Floor Plan	06
4.0 Council Chamber Use & Circulation	07
5.0 Guildhall Use: Civic / Ceremonial & Circulation	08
6.0 Office Tenant Use & Circulation	09
7.0 Restaurant Visualisation	10

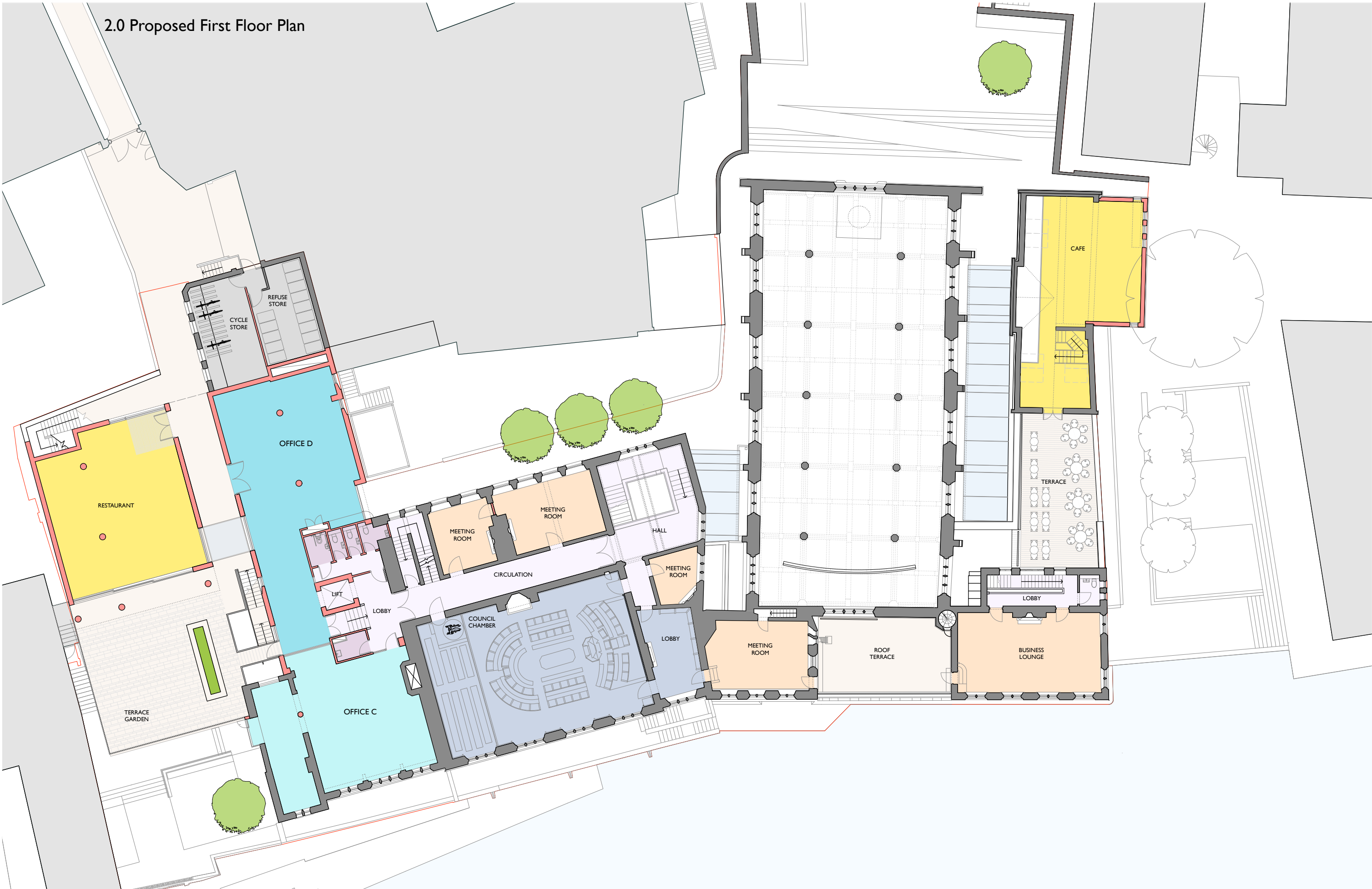
1.0 Proposed Ground Floor Plan



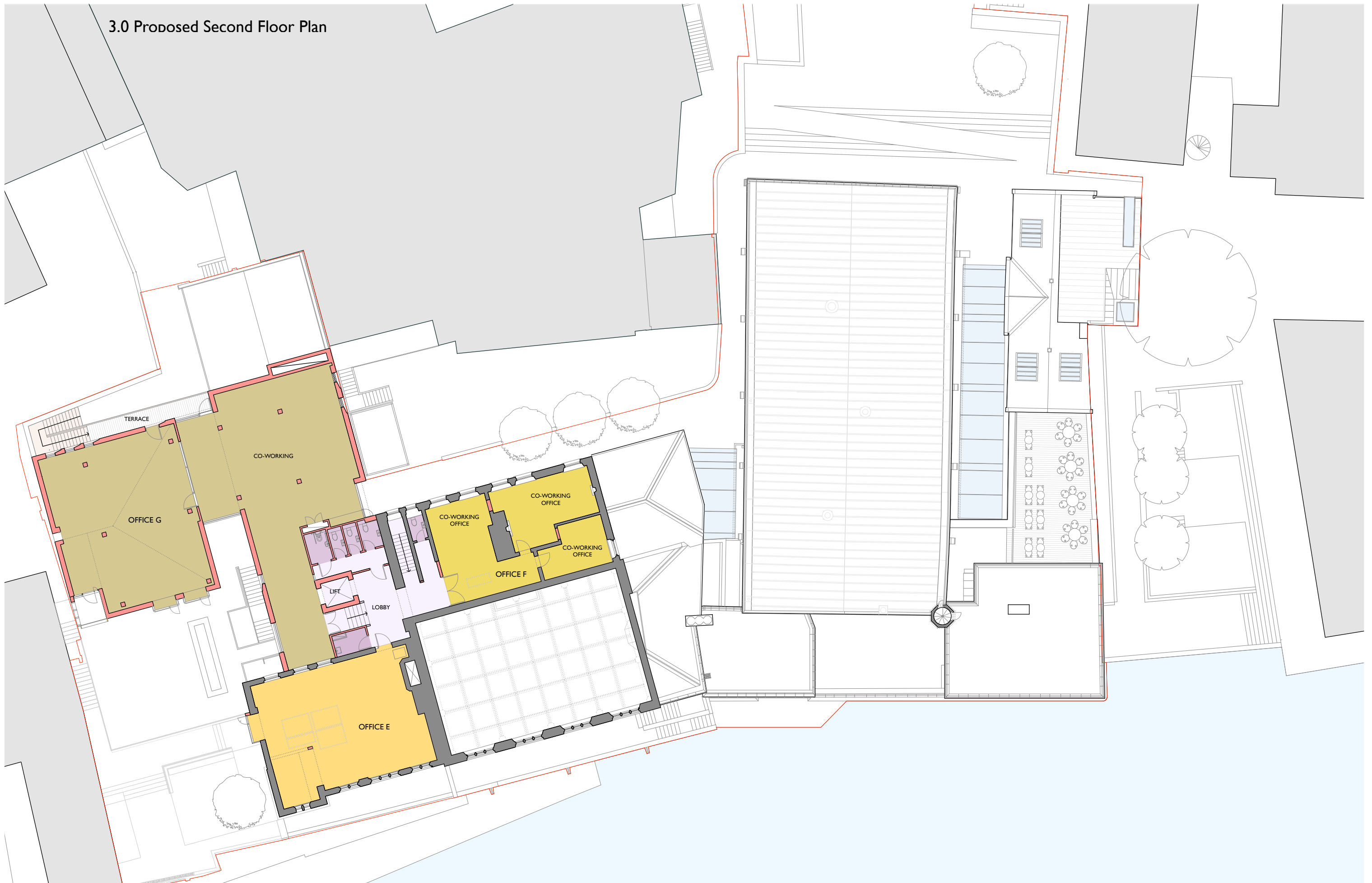
KEY:

■ COMMERCIAL	■ PLANT / STORAGE	■ OFFICE A : 204.8sqm
■ OFFICE	■ CIRCULATION	■ OFFICE B : 89.1sqm
■ COMMITTEE ROOM	■ ANCILLARY	
■ GUILDHALL	■ PUBLIC REALM	

2.0 Proposed First Floor Plan



3.0 Proposed Second Floor Plan



4.0 Council Chamber Use & Circulation

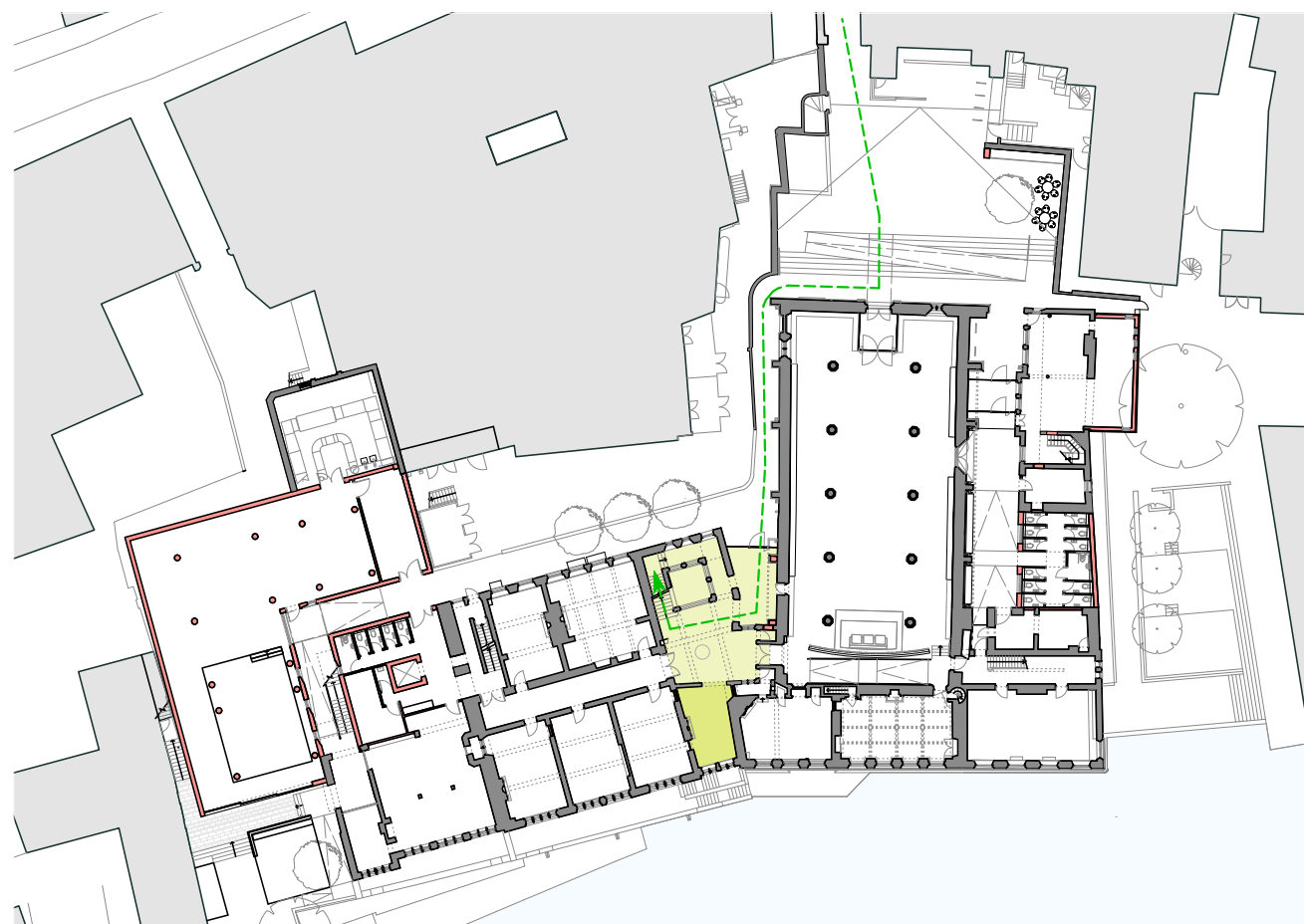


Diagram to show circulation and access for Council Chamber use at proposed ground floor.

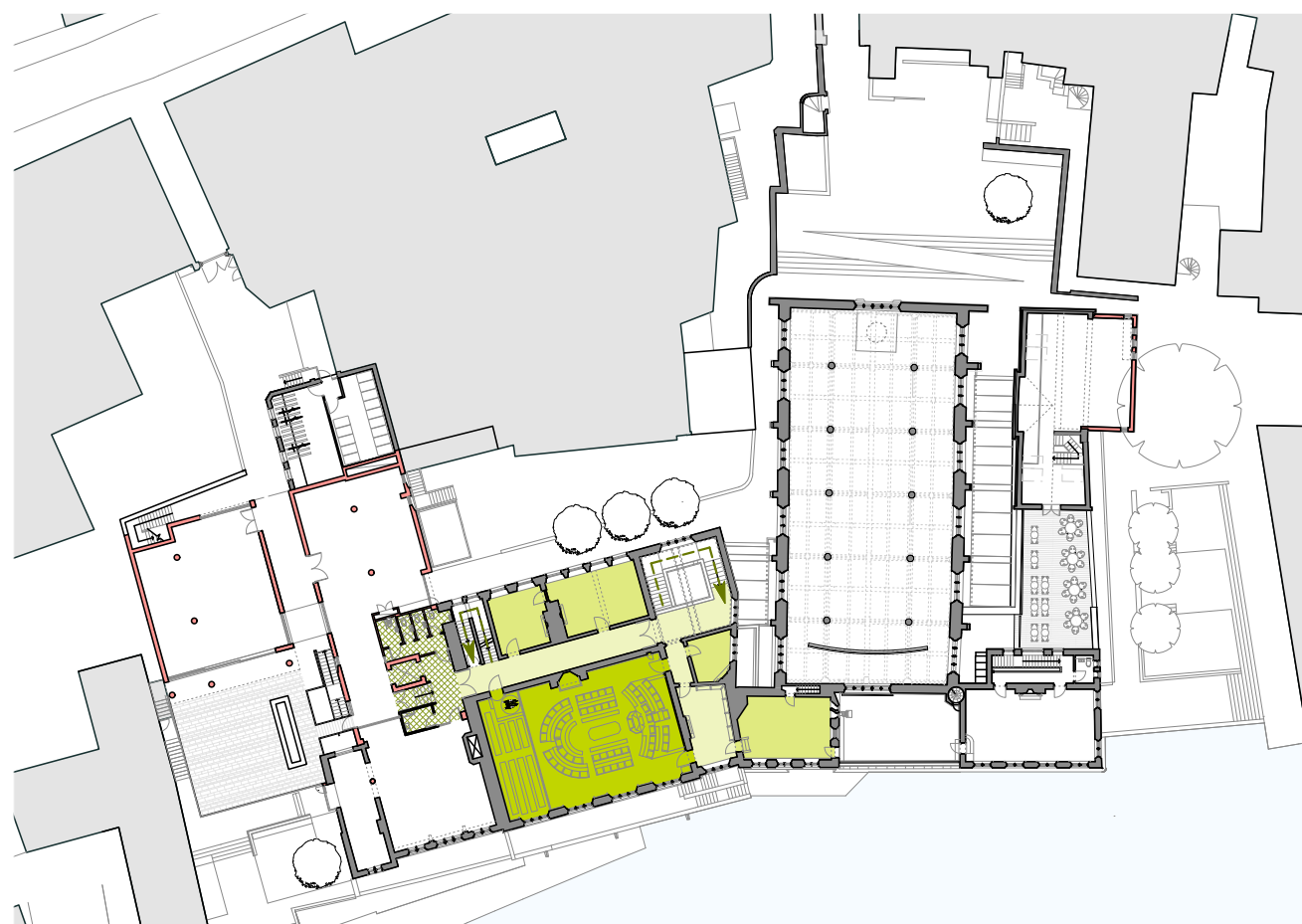


Diagram to show circulation and access for Council Chamber use at proposed first floor.

5.0 Guildhall Use: Civic / Ceremonial & Circulation

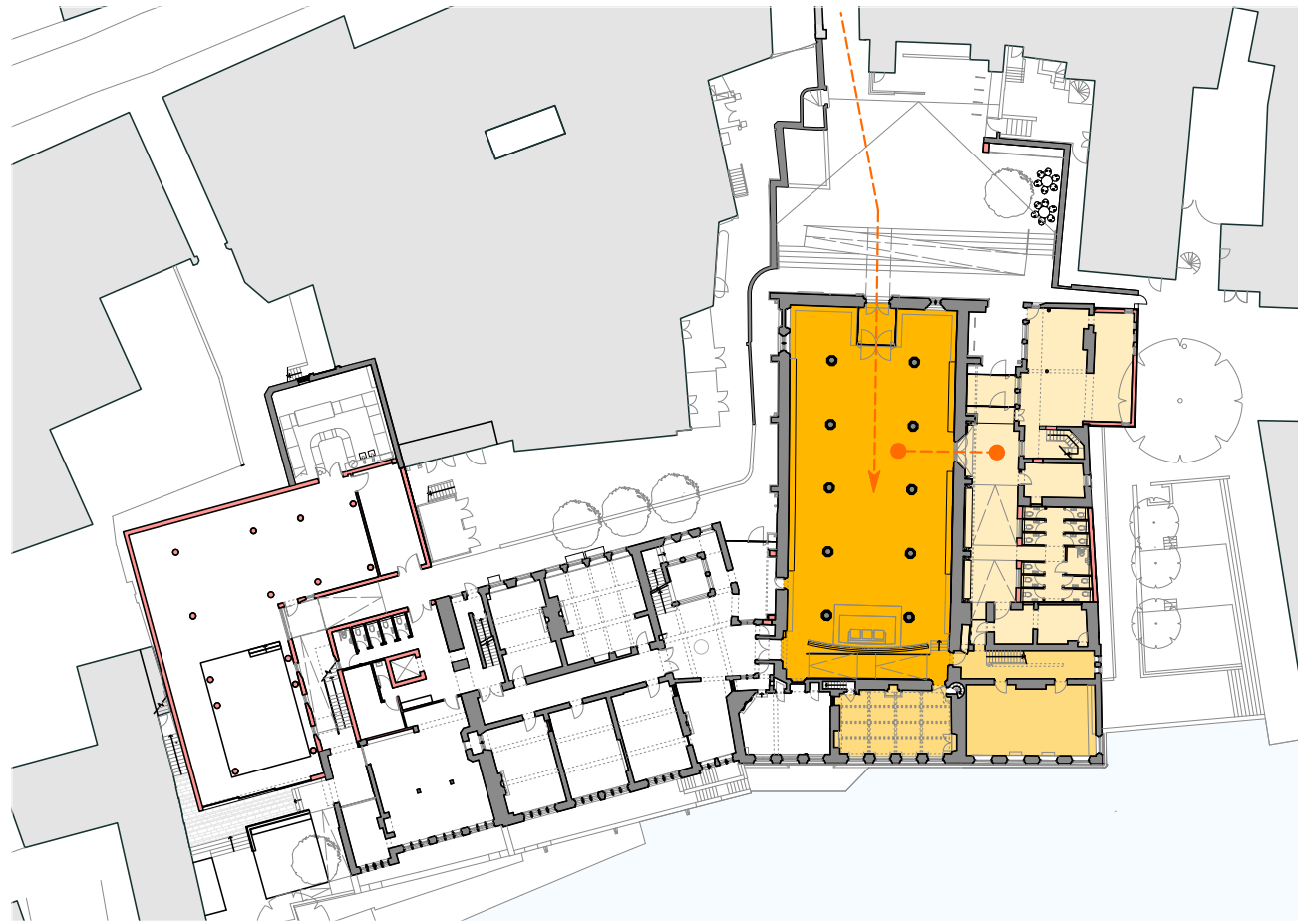


Diagram to show circulation and access for The Guildhall during Civic and Ceremonial events. Access is through Common Hall Yard and the main door to The Guildhall. Interconnectivity is provided to the South Range ancillary accommodation of café space, WC's and furniture store through the proposed new opening. During such events the meeting room and Business Club shall be closed to the public and office users for additional supportive break-out space such as robing etc.

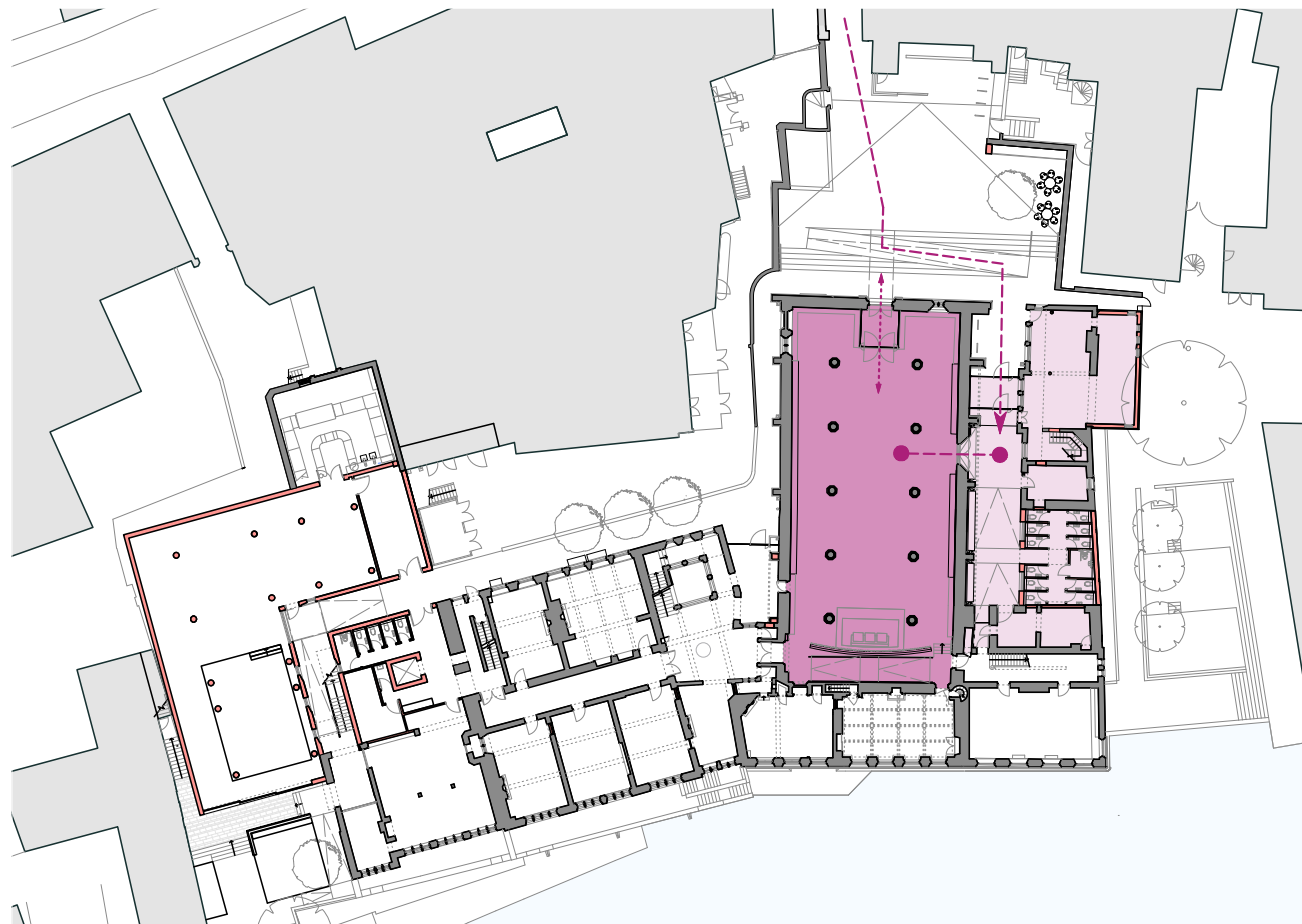


Diagram to show circulation and access for The Guildhall during public events such as concerts or exhibitions. Access is through the glazed South Range Slype space, with an additional entrance through the main Guildhall door if required. Interconnectivity is provided to the South Range ancillary accommodation of café space, WC's and furniture store through the proposed new opening.

6.0 Office Tenant Use & Circulation

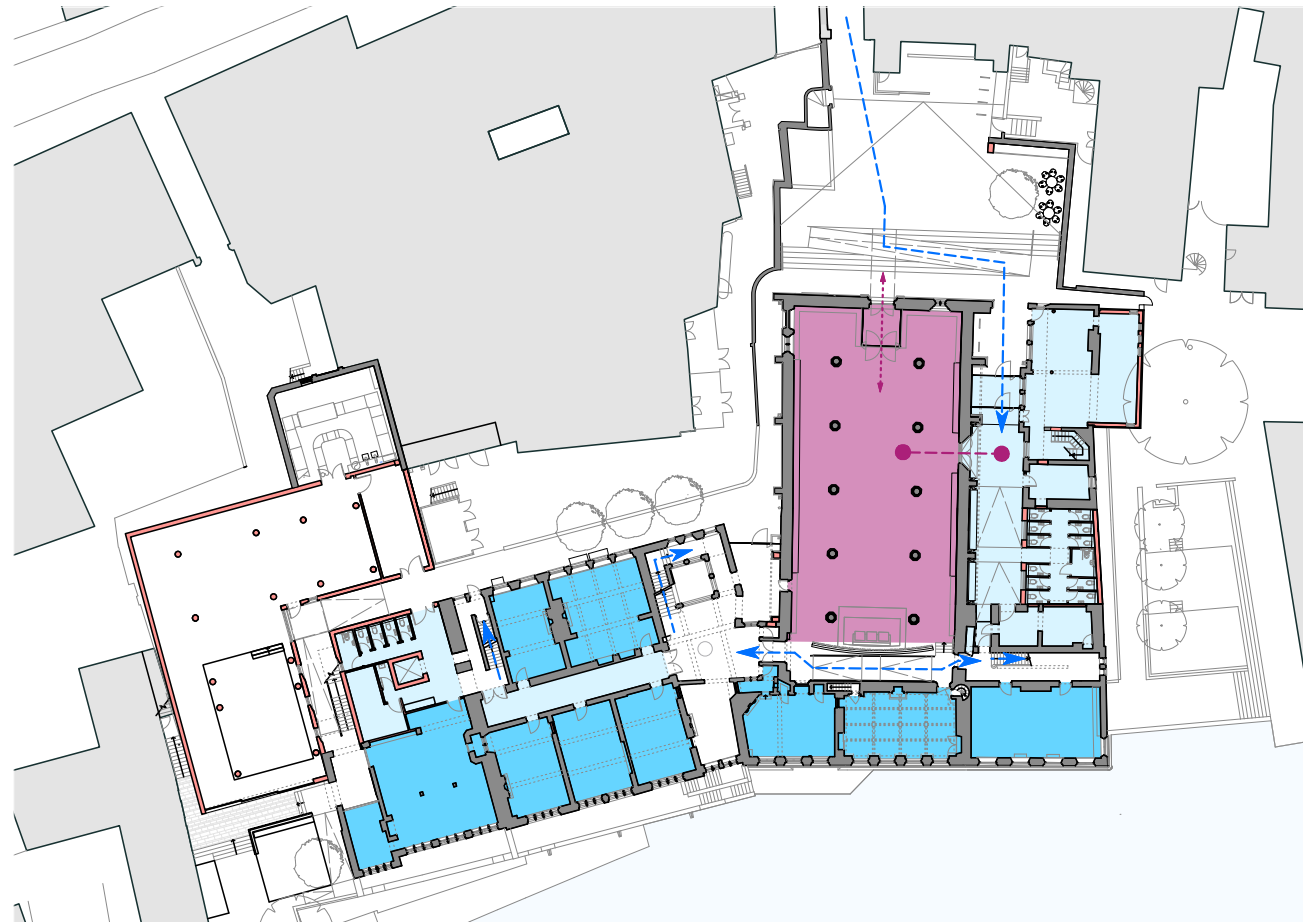


Diagram to show circulation and access for the office tenants, and Business Club at ground floor. Access is through the glazed South Range Slype space past the ancillary accommodation of café space, WC's and furniture store. Interconnectivity to the offices is provided behind the Guildhall screen via the proposed ramp.

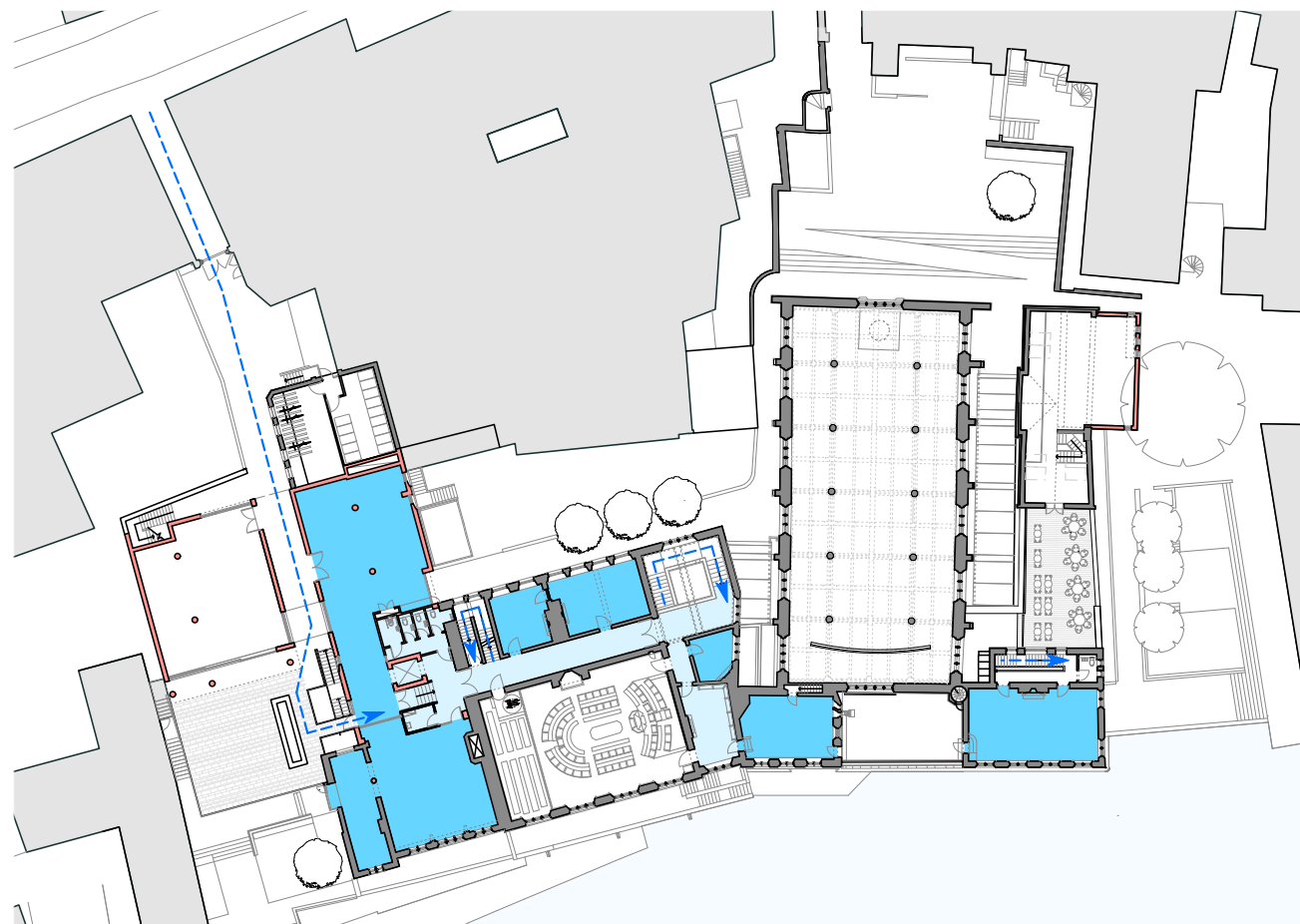


Diagram to show circulation and access for the office tenants at first floor. Access is from Lendal and via a bridge link within the river terrace area.

7.0 Restaurant Visualisation



LONDON
Studio 09
14 Southgate Road
London
N1 3LY
Tel: 020 7620 6114

BIRMINGHAM
Cornwall Buildings
45 Newhall Street
Birmingham
B3 3QR
T: 0121 213 6364

email: mail@bff-architects.co.uk

BURRELL | FOLEY | FISCHER
ARCHITECTS AND URBAN DESIGNERS